



# Condition Report

Date: 10/16/2024 Property Condition: Borderline Total Loss	<b>Loss Recap for Borderline Total Loss</b> Damage Appraisal..\$14,947.96 Percent of ACV..... 77.55% Deductible.....\$1,000.00 Total.....\$13,947.96
<b>Assignment Number</b> 484-409-0010-1	Assignment Received: 9/12/2024      Date of Loss: 8/28/2024 Date of First Contact: 9/13/2024      Date of Inspection: 9/16/2024
Office: Wichita Falls, TX (Corp) #484 100 Energy Way Ste 1900 FORT WORTH TX Phone: 888-970-3055 Fax: 800-866-4732	Inspection Location: 1215 E SCOTT AVE WICHITA FALLS, TX 76301
<b>Vehicle/Owner Information:</b> Insured: Clay County Laura Lee Brock Vehicle: 2017 Chevrolet Tahoe VIN #: 1GNLCDEC5HR195882	<b>Repair Facility:</b> Kevins Complete Paint & Body 1215 E Scott Ave Wichita Falls, TX 76301 Phone: (940) 322-5801 Fax: (940) 767-5911  Tax# 75 2171725

## Loss Recap

Estimated Amount of Open Damages: 1500.00 Estimated Salvage Value: 0.00 Repair Facility Estimate Amount: 14539.74	<b>Recommendation: Borderline Total Loss</b> Primary Damage: Right Front Corner Secondary Damage: Damage Appraisal: \$14,947.96	<b>Claim #: APD20241527-1</b> <b>Policy #:</b>
Agreed Scope of Damage: No Days to Repair: 17 Appearance Allowance: No	Betterment/Depreciation: No Applicable: False Reason:	Tow Charges: 0.00 Storage Rate Per Day / Total: N/A
		Direction to Pay: No Drivable: No

## Condition Summary

Interior: Good Paint: Good	Engine: 5.3L V8 Mileage: 0	<b>Special Equipment:</b> ROOF LIGHT BAR / GRILL GUARD W/LIGHTS  Approx Cost of Special Equipment: 0.00
<b>Tire Information:</b>		
Tread Depth: <small>(in 32nd's)</small> LF:7 RF: 7 LR:7 RR: 7 Spare:0	Size: 265/60R17 Type: FIRESTONE	

<b>Remarks</b>	<b>Open Items</b>
The vehicle was inspected at the owner's work location. The owner was not present at the time of inspection. No Frame or Suspension Damage Visible. Supplement expected for decal replacement and possible hidden damages. Odometer and production date could not be obtain because I did not have a key to the vehicle. Registration could not be obtained because there is no sticker on the windshield.  10.16.24 Shop supplement 1 complete - additional damages found. Another supplement expected for body decals, LED lamps in the grille guard, and siren replacement once invoices are received.	10.16.24 Shop supplement 1 complete - additional damages found. Another supplement expected for body decals, LED lamps in the grille guard, and siren replacement once invoices are received.

**Alacrity Solutions Wichita Falls TX**  
**PO Box 471909, FORT WORTH, TX 76147**

Office: (888) 970-3055

Fax: (800) 866-4732

**wichitafalls@alacritysas.com**

Estimate ID

4844090010

S1

Claim Number

APD20241527-1

Submit all supplement requests to: <https://supplements.alacritystatus.com>

Insured  
Clay County Laura Lee Brock  
215 W Gilbert St  
Henrietta, TX 76365  
(940) 538-5560 (Work)  
lauralee.brock@co.clay.tx.us

Appraiser  
Dustin Buckley

TX License  
2992206

Classification  
None

Supplemented By  
Dustin Buckley

TX License  
2992206

Classification  
None

Insurance Carrier  
TEXAS ASSOCIATION OF  
COUNTIES

**Additional Information**

CONTACT DATE  
Fri Sep 13 2024 10:47:00  
GMT-0500 (Central Daylight  
Time)

---

**TEXAS ASSOCIATION OF COUNTIES**

Loss Type Collision	Claim Number APD20241527-1	Adjuster Stephen Sanchez (512) 615-8996 (Work) stephens@county.org	Deductible 1000.00 - Not Waived
Loss Date 08/28/2024	Inspection Site KEVINS COMPLETE PAINT BODY 1215 E SCOTT AVE WICHITA FALLS, TX 76301 (940) 322-5801 (Work)	Inspection Date 10/16/2024	Repair Facility KEVINS COMPLETE PAINT & BODY 1215 E SCOTT AVE WICHITA FALLS, TX 76301 License Number: 752171725 (940) 322-5801 (Work) kevinspb21@gmail.com

**Additional Information**

UNDERWRITING COMPANY N/A	FULL CLAIM NUMBER APD20241527-1	INSURANCE CARRIER TEXAS ASSOCIATION OF COUNTIES	CARRIER STREET ADDRESS 1204 SAN ANTONIO
CARRIER CITY, STATE, ZIP AUSTIN, TX 78701	Loss Type ANIMAL		

**2017 Chevrolet Tahoe Police Fleet 4 Door Utility 5.3L 8 Cyl Gas Injected 2WD**

Exterior Color SILVER	License TX-HZG2942	VIN 1GNLCDEC5HR195882	Condition Good
Drivable Yes	Odometer Unknown	Mitchell Service Code 911675	

Primary Point of Impact  
Right Front Corner (1)

Options

Air Conditioning	AM-FM Stereo	Anti-Lock Brake Sys. (ABS)	Auto Air Condition	Automatic Headlights
Auxiliary Input	Bluetooth Wireless Connectivity	CD Player	Cloth Seat	Cruise Control
Daytime Running Lights	Driver Seat With Power Lumbar Support	Driver-Front Air Bag	Dual A/C	Electric Defogger
Electronic Parking Aid	Electronic Stability Control	First Row Split Bench Seat	Front Seats With Power Lumbar Support	Heated Mirror
Keyless Entry System	Left-Curtain Air Bag	Limited Slip Differential	MP3 Player	Passenger-Front Air Bag
Power Door Locks	Power Driver Seat	Power Passenger Seat	Power Remote Mirror	Power Steering
Power Windows	Privacy Glass	Rain Sensing Wipers	Rear Bench Seat	Rear Heating, Ventilation & Air Conditioning
Rearview Camera	Running Boards	Second Row Side Airbag With Head Protection	Side Airbags	Telematic Systems
Theft Deterrent Sys.	Third Row Seat	Tilt Steering Wheel	Tire Pressure Monitoring System	Traction Control/Electronic System
Trailer Hitch				

**Clay County Laura Lee Brock | 2017 Chevrolet Tahoe Police Fleet**

Parts Profile  
TEXAS PARTS

Parts Profile Version  
18.0

		LABOR			PART				
Line #	Description	Operation Type	Total Units	CEG	Type	Number	Qty	Total Price	Tax
<b>Information Labels</b>									
1	100155 Inform Label Emission Control	Remove / Replace	0.0	0.0	OE Discount	19257194	1	\$31.07	
<b>Front Bumper</b>									
2	AUTO Frt Bumper Cover Assy	Overhaul	2.8#	2.8	Existing				
3	100788 Frt Bumper Cover	Remove / Replace	INC#	2.8	Qual Recycled Part	~374128271	1	\$417.00	
4	900510 Line Markup 25.0%							\$104.25	
5	AUTO Frt Bumper Cover	Refinish Only	2.6 C	2.6					

Line #	Description	LABOR				PART				
		Operation	Type	Total Units	CEG	Type	Number	Qty	Total Price	Tax
6	100809 Frt Lwr Bumper Moulding	Remove / Replace	Body	INC#	0.3	Aftermarket New	GM1044135	1	\$102.00	
7	AUTO Frt Bumper Cover	Remove / Install	Body	INC#	1.7					
8	100814 Frt Lwr Bumper Air Deflector	Remove / Replace	Body	INC#	0.4	Aftermarket New	GM1095201	1	\$91.00	
S1 9	900500 ROUGHNECK GRILL GUARD	Remove / Replace	Body*	1.0*	0.0	New	BGGRC15TS	1	\$998.75*	
10	900501 TRAILSENDTRUCK.COM (+25%)									
11	100790 Frt Bumper License Plate Bracket	Remove / Install	Body	INCr	0.2	Existing				
S1 12	100792 R Frt Otr Bumper Filler	Remove / Replace	Body	INC#	0.2	New	22936500	1	\$48.65*	
S1 13	100800 R Frt Bumper Fog Lamp Opening Cover	Remove / Replace	Body	INC#	0.2	New	22936498	1	\$48.82*	
<b>Grille</b>										
14	100768 Grille Assembly	Remove / Replace	Body	INC#	0.5	Qual Recycled Part	~398374634	1	\$433.00	
15	900510 Line Markup 25.0%								\$108.25	
S1 16	100769 Grille Emblem	Remove / Replace	Body	INC#	0.1	New	84690310	1	\$167.32*	
<b>Front Lamps</b>										
17	101740 L Front Combination Lamp	Remove / Install	Body	INC#	0.7	Existing				
18	101502 R Frt Combination Lamp Assembly	Remove / Replace	Body	INC#	0.7	Qual Recycled Part	~399426015	1	\$613.00	
19	900510 Line Markup 25.0%								\$153.25	
20	AUTO Headlamps	Check / Adjust	Body	0.4	0.4					
S1 21	101503 L Frt Combination Lamp Assembly	Remove / Replace	Body	0.2#	0.7	New	23490005	1	\$883.50*	
<b>Hood</b>										
22	100587 Hood Panel (Alum)	Remove / Replace	Body	1.2	1.2	OE Discount	22756628	1	\$705.43	
23	AUTO Hood Outside	Refinish Only	Refinish	3.0 C	3.0					
24	AUTO Add For Hood Underside	Refinish Only	Refinish	1.5 C	1.5					
25	100596 Hood Insulator	Remove / Install	Body	INCr	0.3	Existing				
26	900500 A/M ANTENNA	Remove / Install	Body*	0.3*	0.0	Existing				
S1 27	100598 Frt Hood Weatherstrip	Remove / Replace	Body	INC	0.3	OE Discount	20963560	1	\$50.85	
S1 28	100601 Hood Latch	Remove / Replace	Body	INC#	0.3	OE Discount	85574818	1	\$94.74	
<b>Cooling</b>										
S1 29	100611 Cooling Radiator Support	Remove / Replace	Body	4.9#	4.9	Aftermarket CAPA	GM1225311C	1	\$439.00	
S1 30	935003 EVACUATE & RECHARGE	Additional Labor	Mechanical*	1.4*	0.0					
S1 31	935003 ADD FOR TRANS COOLER	Additional Labor	Mechanical*	0.3*	0.0					
S1 32	AUTO R Front Combination Lamp	Remove / Install	Body	INC#	0.7					

LABOR					PART					
Line #	Description	Operation	Type	Total Units	CEG	Type	Number	Qty	Total Price	Tax
S1 33	AUTO Add To R&R Mechanical Components -M	Remove / Replace	Mechanical	4.1#	4.1					
S1 34	AUTO Evacuate & Recharge A/C -M	Remove / Replace	Mechanical	1.4	1.4					
S1 35	100614 Ambient Temp Sensor	Remove / Replace	Body	INC#	0.3	New	13583411	1	\$15.34	
S1 36	100615 Cooling Radiator Mounting Panel	Remove / Replace	Body	INC#	2.8	New	23266739	1	\$598.00*	
S1 37	935003 ADD FOR SHUTTER	Additional Labor	Mechanical*	0.3*	0.0					
S1 38	AUTO Grille Assy	Remove / Install	Body	INC#	0.5					
S1 39	102454 Cooling Radiator Shutter	Remove / Replace	Body	0.7#	0.7	New	84378163	1	\$285.00*	
S1 40	102311 Cooling Radiator	Remove / Replace	Mechanical*	2.7#	3.4	New	84186718	1	\$337.00*	
S1 41	AUTO Vacuum-Fill & Bleed Cooling System	Remove / Replace	Body	0.5	0.5					
S1 42	100631 Upr Cooling Shield	Remove / Replace	Body	INC#	0.3	New	84295007	1	\$96.90*	
43	101541 Cooling Fan Shroud	Remove / Install	Mechanical*	INCr#	1.2	Existing				
S1 44	101534 Cooling Radiator Tank	Remove / Replace	Body	INC	0.5	New	84368362	1	\$76.38*	
A/C / Heater / Ventilation										
45	100225 A/C Condenser -M	Remove / Install	Mechanical	INC#	4.2	Existing				
S1 46	100232 Compressor Bracket -M	Remove / Replace	Mechanical	0.0	0.0	New	12626078	1	\$76.56	
Front Fender										
47	100640 R Fender Panel	Remove / Replace	Body	4.0#	5.7	OE Discount	22756424	1	\$603.93	
48	AUTO R Fender Outside	Refinish Only	Refinish	2.1 C	2.5					
49	AUTO R Add To Edge Fender	Refinish Only	Refinish	1.2 C	1.2					
S1 50	100643 R Upr Fender Rear Bracket	Remove / Replace	Body	INC#	0.2	OE Discount	23488050	1	\$56.52	
S1 51	AUTO R Rear Upr Bracket	Refinish Only	Refinish	0.3 C	0.3					
52	100647 R Fender Insulator	Remove / Replace	Body	INC#	0.2	OE Discount	84342551	1	\$46.75	
53	100651 R Fender Support	Remove / Replace	Body	INC	0.2	OE Discount	23115310	1	\$41.01	
54	100653 R Upr Fender Insulator	Remove / Replace	Body	0.0	0.0	OE Discount	23431218	1	\$17.91	
55	100655 R Fender Brace	Remove / Replace	Body	0.2	0.2	OE Discount	22814873	1	\$14.52	
56	101601 R Fender Liner	Remove / Replace	Body	INC	0.3	Qual Recycled Part	~397167355	1	\$85.00	
57	900510 Line Markup 25.0%								\$21.25	
58	101603 R Fender Protector	Remove / Replace	Body	INC	0.2	OE Discount	23463925	1	\$31.63	
Frame										
S1 59	100875 L Frt Upr Frame Cushion	Remove / Replace	Body	0.0	0.0	New	22825456	1	\$114.14*	

Line #	Description	LABOR			PART					
		Operation	Type	Total Units	CEG	Type	Number	Qty	Total Price	Tax
<b>Air Cleaner</b>										
S1 60	102380	Air Cleaner Assembly	Remove / Replace	Mechanical*	INC	0.6	New	23252207	1	\$157.32*
S1 61	102381	Air Cleaner Support	Remove / Replace	Body	0.0	0.0	New	84129816	1	\$95.07*
<b>Electrical</b>										
S1 62	100505	Battery Tray	Remove / Replace	Body	INC#	0.8	New	84177367	1	\$96.26
<b>Rocker / Pillars / Floor</b>										
S1 63	101122	R Door Opening Frame	Repair	Body	1.0*#	25.0	Existing			
64	900501	R ROOF RAIL								
S1 65	AUTO	R Door Opening Frame Complete	Refinish Only	Refinish	1.2* C	5.5	Existing			
<b>Front Door</b>										
S1 66	100552	R Frt Door Shell	Remove / Replace	Body	5.1#	5.1	New	84348727	1	\$975.00*
S1 67	AUTO	R Frt Door Outside	Refinish Only	Refinish	2.3 C	2.7				
S1 68	AUTO	R Frt Add For Jambs & Interior	Refinish Only	Refinish	1.0 C	1.0				
S1 69	AUTO	R Frt Add To R&I/R&R Side Air Bag Sensor	Remove / Replace	Mechanical	0.3	0.3				
70	101927	R Frt Upr Door Window Frame Moulding	Remove / Install	Body	INC#	0.3	Existing			
71	100561	R Frt Rear View Mirror	Remove / Install	Body	INC#	0.7	Existing			
72	101929	R Frt Door Applique	Remove / Install	Body	INC#	0.3	Existing			
73	100563	R Frt Otr Door Belt Moulding	Remove / Install	Body	INC#	0.9	Existing			
74	101933	R Frt Door Trim Panel	Remove / Install	Body	INC	0.4	Existing			
75	100103	R Frt Otr Door Handle	Remove / Install	Body	INC	0.3	Existing			
S1 76	100068	R Frt Upr Door Hinge	Remove / Replace	Body	0.3#	0.3	New	13581568	1	\$124.95
S1 77	935000	R Frt Upr Door Hinge	Refinish Labor	Refinish	0.4* C	0.0				
78	900501	Modified Refinish With Full Clear Coat								
S1 79	100070	R Frt Lwr Door Hinge	Remove / Replace	Body	0.3#	0.3	New	13581569	1	\$119.95
S1 80	935000	R Frt Lwr Door Hinge	Refinish Labor	Refinish	0.4* C	0.0				
81	900501	Modified Refinish With Full Clear Coat								
S1 82	AUTO	R Frt Door Assembly	Remove / Install	Body	INC#	1.0				
S1 83	100082	R Frt Door Weatherstrip	Remove / Replace	Body	0.1*	0.2	New	22888057	1	\$53.72*
S1 84	900500	DETRIM LKQ ASSY	Remove / Install	Body*	2.5*	0.0	Existing			
<b>Rear Door</b>										
S1 85	101424	R Rear Door Repair Panel	Repair	Body	1.0*#	6.9	Existing			

Line #	Description	LABOR				PART				
		Operation	Type	Total Units	CEG	Type	Number	Qty	Total Price	Tax
S1 86	AUTO R Rear Door Outside	Refinish	Refinish	2.1* C	2.6	Existing				
87	900501 Modified Refinish With Full Clear Coat									
S1 88	101186 R Rear Door Front Applique	Remove / Install	Body	0.3#	0.3	Existing				
S1 89	101188 R Rear Door Rear Applique	Remove / Install	Body	0.3#	0.3	Existing				
S1 90	101184 R Rear Upr Door Moulding	Remove / Install	Body	0.3#	0.3	Existing				
S1 91	101429 R Rear Otr Door Belt Moulding	Remove / Install	Body	0.2	0.2	Existing				
S1 92	101931 R Rear Door Trim Panel	Remove / Install	Body	INC	0.4	Existing				
S1 93	101440 R Rear Otr Door Handle	Remove / Install	Body	0.7#	0.7	Existing				
<b>Additional Costs &amp; Materials</b>										
94	AUTO Paint/Materials	Additional Cost							\$400.00	
95	AUTO Hazardous Waste Disposal	Additional Cost							\$5.00*	
S1 96	900500 4 WHEEL ALIGNMENT	Remove / Replace	Body*	0.0*	0.0	Sublet		1	\$89.99*	
S1 97	900500 A/M COOLANT - EXTENDED LIFE OEM (2 @ \$21.99)	Remove / Replace	Body*	0.0*	0.0	New		2	\$43.98*	
<b>Additional Operations</b>										
98	AUTO Clear Coat	Additional Operation	Refinish	2.5*	0.0				\$0.00*	
99	900501 Estimate Calculated Using A Preset Threshold Amount For The Clear Coat									
100	931127 Pre Repair Scan	Additional Operation	Mechanical	0.5*	0.0				\$0.00	
101	931128 Post Repair Scan	Additional Operation	Mechanical	0.5*	0.0				\$0.00	
102	933005 Restore Corrosion Protection	Additional Operation	Body	0.2*	0.0				\$10.00*	
103	933003 Tint Color	Additional Operation	Refinish	0.5*	0.0				\$0.00	
104	933018 Mask For Overspray	Additional Operation	Refinish	0.0*	0.0				\$5.00*	
105	933066 Cover Car	Additional Operation	Refinish	0.0*	0.0				\$5.00*	
S1 106	900500 EMERGENCY LIGHTS ROOF MOUNTED	Remove / Install	Body*	1.0*	0.0	Existing				
S1 107	900500 LED LALMPS IN GRILL GUARD	Remove / Replace	Body*	0.5*	0.0	New		1	\$0.00*	
S1 108	900500 SET UP AND MEASURE	Repair	Body*	2.0*	0.0	Existing				
S1 109	900500 FRAME PULLS	Repair	Body*	3.0*	0.0	Existing				
<b>Body Components</b>										
110	931112 Running Boards	Remove / Install	Body	0.5*	0.0	Existing				
111	900501 R SIDE ONLY									

\* Judgment Item  
 T Included in Two Tone Calculation

# Labor Note Applies  
 d Discontinued by Manufacturer

C Included in Clear Coat Calculation  
 A Included in Clear Coat and Two Tone Calculation  
 r CEG R&R Time Used for this Labor Operation  
 [ ] Verify the part number and price before ordering

**Parts Vendors**

CLASSIC CHEVROLET OEMD  
 1101 W. STATE HWY 114  
 GRAPEVINE TX 76051  
 (866) 673-1597 (Work)

HEWLETT GM OEMD  
 200 COMMERCE BL.  
 GEORGETOWN TX 78626  
 (800) 901-2990 (Work)

Line	Part #	Total Price
22	22756628	\$705.43
47	22756424	\$603.93

Line	Part #	Total Price
1	19257194	\$31.07

NAT AUTOBODY PRTS WHSE  
 16221 CNTRL COMMERCE DR.  
 PFLUGERVILLE TX 78660  
 (512) 255-9000 (Work)  
 (877) 214-7111 (Work)

UCC/NEW WORLD-DFW  
 1720 E. HWY 356 (214)352-1191 EXT. 232  
 IRVING TX 75060  
 (214) 352-1191 (Work)

Line	Part #	Total Price
29	GM1225311C	\$439.00

Line	Part #	Total Price
6	GM1044135	\$102.00
8	GM1095201	\$91.00

WEST POINT AUTO PTS OEMD  
 16835 KATY FWY  
 HOUSTON TX 77094  
 (800) 364-6444 (Work)

Line	Part #	Total Price
27	20963560	\$50.85
28	85574818	\$94.74
50	23488050	\$56.52
52	84342551	\$46.75
53	23115310	\$41.01
54	23431218	\$17.91
55	22814873	\$14.52
58	23463925	\$31.63

**Disclaimer:** This estimate has been prepared based on the use of replacement parts supplied by a source other than the manufacturer of your motor vehicle. Warranties applicable to these replacement parts are provided by the manufacturer



or distributor of these parts rather than the manufacturer of your vehicle.

### Recycled Part Vendors

LKQ North Texas  
 904 I-45 South  
 Hutchins TX 75141  
 (972) 225-1600 (Work)

Line	Part #	Total Price	Vehicle	Description	VIN
3	~374128271	<b>\$417.00</b>	2020		
Supplier Notes: Bumper Cover - Front !NOT PAINTED! !!BARE NEEDS BUFF!!, QuoteID:2658366731					
14	~398374634	<b>\$433.00</b>	2020		
Supplier Notes: Grille W/O OFF ROAD APPEARANCE PACKAGE; W/O BLACK BOWTIE; PREMIER (OPT 1LZ), QuoteID:2658373437					
18	~399426015	<b>\$613.00</b>	2017		
Supplier Notes: Headlamp Assembly LT,4DR R, W/O HID; W/O BLUE TINT; R., QuoteID:2658396312					
56	~397167355	<b>\$85.00</b>	2019		
Supplier Notes: Inner Fender Liner LT,4DR R, R., QuoteID:2658411357					

Disclaimer: Recycled part pricing may represent either actual pricing (the price at which the recycler is willing to sell the part for in its existing condition) or undamaged pricing (the price at which the recycler would sell the part if it was in undamaged condition). If you are unsure, please contact the automotive recycler. Some parts located for this quote may be interchangeable but may not be an exact match. If you are unsure, please contact the automotive recycler.

### Estimate Totals

Labor	Units	Rate	Sublet Add'l Amount	Totals
Body Labor	35.5	\$66.00	\$10.00	\$2,353.00
Refinish Labor	21.1	\$60.00	\$10.00	\$1,276.00
Mechanical Labor	11.5	\$100.00		\$1,150.00
<b>Total Labor</b>	<b>68.1</b>			<b>\$4,779.00</b>
			Taxable	\$0.00
			Tax 0.0000%	\$0.00
			Non-Taxable	\$4,779.00
			Pre-Tax Discount 0.00%	\$0.00
			<b>Labor Total</b>	<b>\$4,779.00</b>
Parts	Amount			Totals
Taxable Parts	\$0.00			\$0.00
			Parts Adjustments	\$387.00
			Tax 0.0000%	\$0.00
			Non-Taxable	\$9,376.96
			Pre-Tax Discount 0.00%	\$0.00
			<b>Parts Total</b>	<b>\$9,763.96</b>
Costs	Amount			Totals
Paint Materials	\$400.00			\$400.00
Shop Materials	\$0.00			\$0.00

**Estimate Totals**

Other Additional Costs	<b>\$5.00</b>		<b>\$5.00</b>
Paint Materials:		Taxable	<b>\$0.00</b>
- Refinish Units: 21.1 units		Tax 0.0000%	<b>\$0.00</b>
- Rate: \$44.00		Non-Taxable	<b>\$405.00</b>
- Rate Max: 99.9 units		Pre-Tax Discount 0.00%	<b>\$0.00</b>
- Additional Rate: \$0.00		<b>Costs Total</b>	<b>\$405.00</b>

<b>Gross Totals</b>		<b>Amount</b>	
Gross Total	<b>\$14,947.96</b>		<b>\$14,947.96</b>

Taxable	<b>\$0.00</b>
Tax	<b>\$0.00</b>
Non-Taxable	<b>\$14,947.96</b>
Pre-Tax Discount 0.00%	<b>\$0.00</b>
<b>Gross Total</b>	<b>\$14,947.96</b>

<b>Adjustments</b>		<b>Amount</b>	
Deductible	<b>-\$1,000.00</b>		<b>-\$1,000.00</b>

<b>Total Customer Responsibility</b>		<b>-\$1,000.00</b>
--------------------------------------	--	--------------------

<b>Net Estimate Total</b>	<b>\$13,947.96</b>
Less Original Net Total	<b>\$5,831.85</b>
Net Supplement Amount	<b>\$8,116.11</b>

**S1: Dustin Buckley      \$8,116.11**

\*\*\*\*\*Notice\*\*\*\*\*

This is not an authorization for repair. All costs of repairs are the sole responsibility of the vehicle owner, who must authorize all repairs. Failure to deliver a copy of this appraisal to the repair shop by the vehicle owner may result in out of pocket expense to the vehicle owner. Providing a copy of this appraisal is not an acceptance of coverage or liability and all issues of coverage or liability are to be determined by the insurance carrier.

\*\*\*\*\*Notice\*\*\*\*\*

Deductibles may or may not be addressed or included in this appraisal. If applicable, the repairer should collect the deductible from the vehicle owner before releasing the repaired vehicle.

\*\*\*\*\*Notice\*\*\*\*\*

It is the repairer's responsibility to send notification of the supplement via our supplement link, fax or email including a statement whether the repairs have been halted on the vehicle. Alacrity Solutions will respond to your request within 24 hours. Please allow 48 hours to complete the supplement processing from the request date to ensure the vehicle is released.

**Disclaimer:** Any person who knowingly presents a false or fraudulent claim for payment of a loss or benefit or knowingly presents false information in an application for insurance is guilty of a crime and may be subject to fines and confinement in prison.

## Estimate Event Log

Job Created	9/12/2024 10:30 PM
Supplement 1 Started	10/16/2024 10:26 AM
Supplement 1 Printed	10/16/2024 11:14 AM
Supplement 1 Committed	10/16/2024 11:14 AM
Estimate Version	1
Estimate Retrieval ID	1002926566

# Supplement Delta Report

## Comparison of Estimate 4844090010 Original Estimate & Supplement 1

Date & Time	Estimate ID	Supplement No.	Profile ID
10/16/2024	4844090010	1	South Central Profile
11:14:34 AM			

### Clay County Laura Lee Brock | 2017 Chevrolet Tahoe Police Fleet

Damage Assessed By	Supplemented By	Date of Loss
Dustin Buckley	Dustin Buckley	08/28/2024

### Global Changes Original Estimate **S1**

#### Labor Rates

Bdy-S	\$63.00	\$66.00
Glass	\$48.00	\$61.00
Frame	\$68.00	\$67.00
Aluminium Repair	\$60.00	\$61.00

### Estimate Line Changes - Primary Estimate

Supp/	LABOR					PART			
Line #	Item Description	Operation	Type	Total Units	CEG	Type	Number	Price	
<b>Changed Entries</b>									
	9	ROUGHNECK GRILL GUARD	Remove / Replace	Body	1.0*	0.00	New	BGGRC15 TS	\$799.00*
S1	9	ROUGHNECK GRILL GUARD	Remove / Replace	Body	1.0*	0.00	New	BGGRC15 TS	<b>\$998.75*</b>
	13	L Front Combination Lamp	Remove / Install	Body	0.20	0.70	Existing	Existing	\$0.00
S1	17	L Front Combination Lamp	Remove / Install	Body	INC	0.70	Existing	Existing	\$0.00
	35	R Frt Upr Door Window Frame Moulding	Remove / Install	Body	0.30	0.30	Existing	Existing	\$0.00
S1	70	R Frt Upr Door Window Frame Moulding	Remove / Install	Body	INC	0.30	Existing	Existing	\$0.00

Supp/	LABOR					PART			
Line #	Item Description	Operation	Type	Total Units	CEG	Type	Number	Price	
	38	R Frt Otr Door Belt Moulding	Remove / Install	Body	0.90	0.90	Existing	Existing	\$0.00
S1	73	R Frt Otr Door Belt Moulding	Remove / Install	Body	INC	0.90	Existing	Existing	\$0.00
	40	R Frt Otr Door Handle	Remove / Install	Body	0.30	0.30	Existing	Existing	\$0.00
S1	75	R Frt Otr Door Handle	Remove / Install	Body	INC	0.30	Existing	Existing	\$0.00
	36	R Frt Door Applique	Remove / Install	Body	0.30	0.30			
S1	72	R Frt Door Applique	Remove / Install	Body	INC	0.30	Existing	Existing	\$0.00

#### Deleted Entries

S1	32	R Frt Door Repair Panel	Repair	Body	2.0*	0.00	Existing	Existing	\$0.00
S1	33	R Frt Door Outside	Refinish	Refinish	2.0*	2.70	Existing	Existing	\$0.00
S1	34	Modified Refinish With Full Clear Coat							

#### Added Entries

S1	11	Frnt Bumper License Plate Bracket	Remove / Install	Body	INC	0.20	Existing	Existing	\$0.00
S1	12	R Frt Otr Bumper Filler	Remove / Replace	Body	INC	0.20	New	22936500	\$48.65*
S1	13	R Frt Bumper Fog Lamp Opening Cover	Remove / Replace	Body	INC	0.20	New	22936498	\$48.82*
S1	16	Grille Emblem	Remove / Replace	Body	INC	0.10	New	84690310	\$167.32*
S1	21	L Frt Combination Lamp Assembly	Remove / Replace	Body	0.20	0.70	New	23490005	\$883.50*
S1	27	Frnt Hood Weatherstrip	Remove / Replace	Body	INC	0.30	OE Discount	20963560	\$50.85
S1	28	Hood Latch	Remove / Replace	Body	INC	0.30	OE Discount	85574818	\$94.74
S1	29	Cooling Radiator Support	Remove / Replace	Body	4.90	4.90	Aftermarket New	GM12253 11C	\$439.00
S1	30	EVACUATE & RECHARGE	Add'l Labor	Mechanical	1.4*	0.00			
S1	31	ADD FOR TRANS COOLER	Add'l Labor	Mechanical	0.3*	0.00			

Supp/	LABOR					PART		
Line #	Item Description	Operation	Type	Total Units	CEG	Type	Number	Price
S1 32	R Front Combination Lamp	Remove / Install	Body	INC	0.70			
S1 33	Add To R&R Mechanical Components -M	Remove / Replace	Mechanical	4.10	4.10			
S1 34	Evacuate & Recharge A/C -M	Remove / Replace	Mechanical	1.40	1.40			
S1 35	Ambient Temp Sensor	Remove / Replace	Body	INC	0.30	New	13583411	\$15.34
S1 36	Cooling Radiator Mounting Panel	Remove / Replace	Body	INC	2.80	New	23266739	\$598.00*
S1 37	ADD FOR SHUTTER	Add'l Labor	Mechanical	0.3*	0.00			
S1 38	Grille Assy	Remove / Install	Body	INC	0.50			
S1 39	Cooling Radiator Shutter	Remove / Replace	Body	0.70	0.70	New	84378163	\$285.00*
S1 40	Cooling Radiator	Remove / Replace	Mechanical	2.70	3.40	New	84186718	\$337.00*
S1 41	Vacuum-Fill & Bleed Cooling System	Remove / Replace	Body	0.50	0.50			
S1 42	Upr Cooling Shield	Remove / Replace	Body	INC	0.30	New	84295007	\$96.90*
S1 43	Cooling Fan Shroud	Remove / Install	Mechanical	INC	1.20	Existing	Existing	\$0.00
S1 44	Cooling Radiator Tank	Remove / Replace	Body	INC	0.50	New	84368362	\$76.38*
S1 45	A/C Condenser -M	Remove / Install	Mechanical	INC	4.20	Existing	Existing	\$0.00
S1 46	Compressor Bracket -M	Remove / Replace	Mechanical	0.00	0.00	New	12626078	\$76.56
S1 50	R Upr Fender Rear Bracket	Remove / Replace	Body	INC	0.20	OE Discount	23488050	\$56.52
S1 51	R Rear Upr Bracket	Refinish	Refinish	0.30	0.30			
S1 59	L Frt Upr Frame Cushion	Remove / Replace	Body	0.00	0.00	New	22825456	\$114.14*
S1 60	Air Cleaner Assembly	Remove / Replace	Mechanical	INC	0.60	New	23252207	\$157.32*
S1 61	Air Cleaner Support	Remove / Replace	Body	0.00	0.00	New	84129816	\$95.07*
S1 62	Battery Tray	Remove / Replace	Body	INC	0.80	New	84177367	\$96.26

Supp/	LABOR					PART		
Line #	Item Description	Operation	Type	Total Units	CEG	Type	Number	Price
S1 63	R Door Opening Frame	Repair	Body	1.0*	0.00	Existing	Existing	\$0.00
S1 64	R ROOF RAIL							
S1 65	R Door Opening Frame Complete	Refinish	Refinish	1.2*	5.50	Existing	Existing	\$0.00
S1 66	R Frt Door Shell	Remove / Replace	Body	5.10	5.10	New	84348727	\$975.00*
S1 67	R Frt Door Outside	Refinish	Refinish	2.30	2.70			
S1 68	R Frt Add For Jambs & Interior	Refinish	Refinish	1.00	1.00			
S1 69	R Frt Add To R&l/R&R Side Air Bag Sensor	Remove / Replace	Mechanical	0.30	0.30			
S1 76	R Frt Upr Door Hinge	Remove / Replace	Body	0.30	0.30	New	13581568	\$124.95
S1 77	R Frt Upr Door Hinge	Refinish	Refinish	0.4*	0.00			
S1 78	Modified Refinish With Full Clear Coat							
S1 79	R Frt Lwr Door Hinge	Remove / Replace	Body	0.30	0.30	New	13581569	\$119.95
S1 80	R Frt Lwr Door Hinge	Refinish	Refinish	0.4*	0.00			
S1 81	Modified Refinish With Full Clear Coat							
S1 82	R Frt Door Assembly	Remove / Install	Body	INC	1.00			
S1 83	R Frt Door Weatherstrip	Remove / Replace	Body	0.1*	0.20	New	22888057	\$53.72*
S1 84	DETRIM LKQ ASSY	Remove / Install	Body	2.5*	0.00	Existing	Existing	\$0.00*
S1 85	R Rear Door Repair Panel	Repair	Body	1.0*	0.00	Existing	Existing	\$0.00
S1 86	R Rear Door Outside	Refinish	Refinish	2.1*	2.60	Existing	Existing	\$0.00
S1 87	Modified Refinish With Full Clear Coat							
S1 88	R Rear Door Front Applique	Remove / Install	Body	0.30	0.30	Existing	Existing	\$0.00
S1 89	R Rear Door Rear Applique	Remove / Install	Body	0.30	0.30	Existing	Existing	\$0.00

Supp/	LABOR					PART		
Line #	Item Description	Operation	Type	Total Units	CEG	Type	Number	Price
S1 90	R Rear Upr Door Moulding	Remove / Install	Body	0.30	0.30	Existing	Existing	\$0.00
S1 91	R Rear Otr Door Belt Moulding	Remove / Install	Body	0.20	0.20	Existing	Existing	\$0.00
S1 92	R Rear Door Trim Panel	Remove / Install	Body	INC	0.40	Existing	Existing	\$0.00
S1 93	R Rear Otr Door Handle	Remove / Install	Body	0.70	0.70	Existing	Existing	\$0.00
S1 96	4 WHEEL ALIGNMENT	Remove / Replace	Body	0.0*	0.00	Sublet	Sublet	\$89.99*
S1 97	A/M COOLANT - EXTENDED LIFE OEM 2 @ 21.99	Remove / Replace	Body	0.0*	0.00	New	New	\$43.98*
S1 106	EMERGENCY LIGHTS ROOF MOUNTED	Remove / Install	Body	1.0*	0.00	Existing	Existing	\$0.00*
S1 107	LED LALMPS IN GRILL GUARD	Remove / Replace	Body	0.5*	0.00	New	New	\$0.00*
S1 108	SET UP AND MEASURE	Repair	Body	2.0*	0.00	Existing	Existing	\$0.00*
S1 109	FRAME PULLS	Repair	Body	3.0*	0.00	Existing	Existing	\$0.00*

## Estimate Totals Changes

Estimate Type	Total Tax	Gross Total	Customer Responsibility	Net Estimate Total
Original Estimate	\$0	\$6,831.85	-\$1,000.00	\$5,831.85
Supplement 1	\$0	\$14,947.96	-\$1,000.00	\$13,947.96

## Net Estimate Totals

Estimate Type	Net Amount
Supplement 1	\$8,116.11
<b>Net Supplement</b>	<b>\$8,116.11</b>
Original Estimate	\$5,831.85
<b>Net Estimate Total</b>	<b>\$13,947.96</b>



Estimate Type	Program Calc Version	Data Versions
Original Estimate	11	SEP_24_V
Supp 1	8	OCT_24_V

Claim #: APD20241527-1

Estimate Gross Total: \$14,947.96

Estimate ID: 4844090010

Profile Name: 1 Alacrity \_ Standard

Supplement #: 1

Profile Version: 6.0

Owner/Insured: Laura Lee Brock, Clay County

Estimating System: Mitchell

Estimate Commit Date: 10/16/2024

## Estimate Compliance: Warning

### Non-Compliance Items

Line #	Description	Actual	Guideline
NA	Mileage missing	0	0
NA	Production Date Missing	0	0
40	Cooling Radiator - 2a - consider AM	0	0
60	Air Cleaner Assembly - 15a - consider LK	0	0
111	Special Entry Alert Max # of 900500 lines exceeded	9.00 Hrs	5.00 Hrs

### Estimator Comment(s):

Notes:

## Estimate Compliance History:

### Revision 3: Warning

Line #	Description	Actual	Guideline
NA	Mileage missing	0	0
NA	Production Date Missing	0	0
40	Cooling Radiator - 2a - consider AM	0	0
60	Air Cleaner Assembly - 15a - consider LK	0	0
111	Special Entry Alert Max # of 900500 lines exceeded	9.00 Hrs	5.00 Hrs

### Revision 2: Warning

Line #	Description	Actual	Guideline
NA	Mileage missing	0	0
NA	Production Date Missing	0	0
40	Cooling Radiator - 2a - consider AM	0	0
60	Air Cleaner Assembly - 15a - consider LK	0	0
111	Special Entry Alert Max # of 900500 lines exceeded	9.00 Hrs	5.00 Hrs

### Revision 1: Warning

Line #	Description	Actual	Guideline
NA	Mileage missing	0	0
NA	Production Date Missing	0	0
40	Cooling Radiator - 2a - consider AM	0	0
60	Air Cleaner Assembly - 15a - consider LK	0	0
111	Special Entry Alert Max # of 900500 lines exceeded	9.00 Hrs	5.00 Hrs



# Kevin's Complete Paint & Body

kevinspb21@gmail.com  
1215 E Scott Ave, Wichita Falls, TX 76301  
Phone: (940) 322-5801

Workfile ID: 760b6544  
PartsShare: 8bWvy2  
Federal ID: 75-2171725

## Preliminary Supplement 1 with Summary

**Customer: Clay County Sheriff's Department**

**Job Number:**

Written By: Kaine Hibbs

Insured: Clay County Sheriff's Department

Policy #:

Claim #:

Type of Loss:

Date of Loss:

Days to Repair: 0

Point of Impact:

**Owner:**  
Clay County Sheriff's Department

**Inspection Location:**  
Kevin's Complete Paint & Body  
1215 E Scott Ave  
Wichita Falls, TX 76301  
Repair Facility  
(940) 322-5801 Business

**Insurance Company:**

## VEHICLE

2017 CHEV Tahoe Commercial (Fleet) 4D UTV 8-5.3L Flex Fuel Direct Injection

VIN: 1GNLCDEC5HR195882  
License:  
State:

Interior Color:  
Exterior Color:  
Production Date:

Mileage In:  
Mileage Out:  
Condition:

Vehicle Out:  
Job #:

### TRANSMISSION

Automatic Transmission  
Overdrive

### POWER

Power Steering  
Power Brakes  
Power Windows  
Power Locks  
Power Mirrors  
Heated Mirrors  
Power Driver Seat  
Power Passenger Seat

### DECOR

Dual Mirrors  
Privacy Glass  
Console/Storage

### CONVENIENCE

Air Conditioning  
Intermittent Wipers  
Tilt Wheel  
Cruise Control  
Rear Defogger  
Keyless Entry  
Alarm  
Message Center  
Rear Window Wiper  
Climate Control  
Dual Air Condition

Backup Camera  
Parking Sensors

### RADIO

AM Radio

FM Radio

Stereo

Search/Seek

CD Player

Auxiliary Audio Connection

### SAFETY

Drivers Side Air Bag  
Passenger Air Bag  
Anti-Lock Brakes (4)  
4 Wheel Disc Brakes  
Traction Control  
Stability Control  
Front Side Impact Air Bags  
Head/Curtain Air Bags  
Communications System  
Hands Free Device

Positraction

### SEATS

Cloth Seats  
Reclining/Lounge Seats  
3rd Row Seat

### WHEELS

Styled Steel Wheels

### PAINT

Clear Coat Paint

### TRUCK

Trailer Hitch  
Trailer Package  
Running Boards/Side Steps

**Preliminary Supplement 1 with Summary**

**Customer: Clay County Sheriff's Department**

**Job Number:**

2017 CHEV Tahoe Commercial (Fleet) 4D UTV 8-5.3L Flex Fuel Direct Injection

Line	Oper	Description	Part Number	Qty	Extended Price \$	Labor	Paint
1		<b>INFORMATION LABELS</b>					
2	*	Repl Emission label	19354745	1	31.07	0.0	
3		<b>FRONT BUMPER</b>					
4		O/H front bumper				2.5	
5	*	Repl LKQ Bumper cover w/park asst +25%	84408066	1	521.25	Incl.	2.6
6		Add for Clear Coat					1.0
7	**	Repl A/M Lower molding w/o adaptive cruise w/tow hooks	22936496	1	102.00	Incl.	
8		Repl Add for fog lamps		1		0.3	
9	**	Repl A/M Air deflector w/o Police pkg	22936501	1	91.00	Incl.	
10	#	S01 Repl roughneck grille guard +25%		1	998.75	1.0	
11		S01 Repl RT Trim cover w/o fog lamps	22936498	1	48.82	Incl.	
12		S01 Repl RT Filler panel	22936500	1	48.65	Incl.	
13		S01 R&I License bracket				0.2	
14		<b>GRILLE</b>					
15	*	Repl LKQ Grille assy standard w/gold emblem +25%	84724083	1	541.25	Incl.	
16		S01 Repl Emblem gold	84690310	1	167.32	Incl.	
17		<b>FRONT LAMPS</b>					
18	*	S01 Repl LKQ LT Headlamp assy w/o HID lamps +25%	23490005	1	883.50	0.1	
19	*	Repl LKQ RT Headlamp assy w/o HID lamps +25%	84294339	1	766.25	Incl.	
20		Aim headlamps				0.5	
21		<b>RADIATOR SUPPORT</b>					
22		S01 Repl Sight shield	84295007	1	96.90	0.2	
23	**	S01 Repl A/M CAPA Radiator support	85545442	1	439.00	7.4	
24		S01 Evacuate & recharge				m 1.4	M
25		S01 Add for trans cooler				m 0.3	M
26	**	S01 Repl A/M CAPA Mount panel	23266739	1	598.00	Incl.	
27		S01 Add for shutter				m 0.3	M
28	**	S01 Repl A/M CAPA Shutter	84378163	1	285.00	0.7	
29		S01 Repl Radiator support cushion	22825456	1	114.14		
30		S01 Repl Radiator support stopper	22806716	1	4.35		
31		S01 Repl Temp sensor	13583411	1	15.34		
32		<b>COOLING</b>					
33	**	S01 Repl A/M Radiator 6-speed trans w/o max trailer pkg	84186718	1	337.00	m Incl.	
34	**	S01 Repl A/M Reservoir tank	84368362	1	76.38	Incl.	
35		S01 R&I R&I shroud as an assy				m Incl.	
36		<b>AIR CONDITIONER &amp; HEATER</b>					
37		S01 R&I Condenser assy Delphi				m Incl.	
38		S01 Repl Compressor assy bracket	12626078	1	76.56		

**Preliminary Supplement 1 with Summary**

**Customer: Clay County Sheriff's Department**

**Job Number:**

2017 CHEV Tahoe Commercial (Fleet) 4D UTV 8-5.3L Flex Fuel Direct Injection

39	<b>HOOD</b>							
40	**	Repl	Opt OEM Hood (ALU)	84348410	1	<u>705.43</u>	<u>1.2</u>	<u>3.0</u>
41			Add for Clear Coat					1.2
42	*		Add for Underside(Complete)					<u>1.5</u>
43			Add for Clear Coat					0.3
44	#	R&I	a/m antenna				0.3	
45		S01	Repl Front seal	20963560	1	55.09	Incl.	
46		S01	Repl Latch assy	85574818	1	98.68	Incl.	
47	<b>FENDER</b>							
48	**	Repl	Opt OEM RT Fender Tahoe	84602084	1	<u>603.93</u>	<u>4.0</u>	<u>2.5</u>
49			Overlap Major Adj. Panel					-0.4
50	*		Add for Clear Coat					<u>0.0</u>
51	*		Add for Edging					<u>1.2</u>
52	*		Add for Clear Coat					<u>0.0</u>
53	**	Repl	Opt OEM RT Rear insulator	84342551	1	<u>46.75</u>	Incl.	
54	**	Repl	Opt OEM RT Fender brace	23115310	1	<u>41.01</u>		
55	**	Repl	Opt OEM Fender insulation	23431218	1	<u>17.91</u>	<u>0.2</u>	
56	**	Repl	Opt OEM RT Fender reinforcement	22814873	1	<u>14.52</u>	Incl.	
57	*	Repl	LKQ RT Fender liner Tahoe w/o Z71 pkg +25%	22806317	1	106.25	Incl.	
58	**	Repl	Opt OEM RT Fender protector	23463925	1	<u>31.63</u>	Incl.	
59		S01	Repl RT Fender upper bracket	23488050	1	58.87	0.1	
60	<b>ELECTRICAL</b>							
61		S01	Repl Battery tray	84177367	1	96.26	Incl.	
62	<b>ENGINE</b>							
63		S01	Repl Air cleaner assy support	84129816	1	95.07		
64		S01	Repl Air cleaner assy	23252207	1	157.32 m	Incl.	
65	<b>PILLARS, ROCKER &amp; FLOOR</b>							
66	*	R&I	RT Step bar				<u>0.5</u>	
67	*	S01	Rpr <u>RT Roof rail</u>				<u>1.0</u>	<u>1.2</u>
68		S01	Overlap Major Adj. Panel					-0.4
69		S01	Add for Clear Coat					0.2
70	<b>FRONT DOOR</b>							
71	*	S01	Repl LKQ RT door assy +25%	84348727	1	975.00	<u>5.4</u>	3.1
72		S01	Overlap Major Adj. Panel					-0.4
73		S01	Add for Clear Coat					0.5
74	*	S01	R&I RT Upper molding				Incl.	
75	*		R&I RT R&I mirror				Incl.	
76	*	S01	R&I RT Applique				Incl.	
77	*	S01	R&I RT Belt molding				Incl.	
78	*		R&I RT R&I trim panel				Incl.	
79	*	S01	R&I RT Handle, outside body color, w/o chrome w/o passive				Incl.	
80	*	S01	Repl RT Lower hinge	13581569	1	<u>Incl.</u>	0.3	0.3
81		S01	Add for Clear Coat					0.1

**Preliminary Supplement 1 with Summary**

**Customer: Clay County Sheriff's Department**

**Job Number:**

2017 CHEV Tahoe Commercial (Fleet) 4D UTV 8-5.3L Flex Fuel Direct Injection

82	#	S01	R&I	detrim LKQ door assy					2.5		
83	*	S01	Repl	RT Upper hinge	13581568	1	Incl.		0.3	0.3	
84		S01		Add for Clear Coat						0.1	
85		S01	Repl	RT Front w'strip	22888057	1	53.72		0.1		
86		<b>REAR DOOR</b>									
87	*	S01	Rpr	RT Outer panel Tahoe & Yukon					<u>1.0</u>	2.1	
88		S01		Overlap Major Adj. Panel						-0.4	
89		S01		Add for Clear Coat						0.3	
90		S01	R&I	RT Belt w'strip					0.3		
91		S01	R&I	RT Handle, outside w/o chrome w/o passive					0.4		
92		S01	R&I	RT R&I trim panel					0.4		
93		S01	R&I	RT Upper trim panel					0.1		
94		<b>VEHICLE DIAGNOSTICS</b>									
95	*		Rpr	Pre-repair scan				m	<u>0.5</u>	M	
96	*		Rpr	Post-repair scan				m	<u>0.5</u>	M	
97		<b>MISCELLANEOUS OPERATIONS</b>									
98	#		Subl	Hazardous waste		1	5.00				
99	#		Repl	Corrosion protection primer		1	10.00	T	0.2		
100	#			Color tint / color match		1				0.5	
101	#			mask for overspray		1	5.00				
102	#		Repl	Cover Car		1	5.00	T			
103	#	S01	Repl	remove paint and materials cap		1					
104	#	S01	R&I	emergency lights- roof mounted					1.0		
105	#	S01	Repl	siren		1	1.00		0.5	M	
				Note: invoice							
106	#	S01	Repl	led lamps- grille guard mounted		1	1.00		0.5	M	
				Note: invoice							
107	#	S01	Subl	decals		1	1.00	X			
				Note: invoice							
108	**	S01	Repl	A/M Coolant (Extended life/OEM)		2	43.98	T			
109	#	S01	Subl	freon		1	1.00	X			
				Note: invoice							
110	#	S01	Subl	Four wheel alignment		1	89.99	X			
111	#	S01	Rpr	Setup & measure					2.0		
112	#	S01	Rpr	frame pulls					3.0		
				Note: rt frame rail is up and sidesway							
						<b>SUBTOTALS</b>			<b>9,562.94</b>	<b>41.2</b>	<b>20.4</b>

**Preliminary Supplement 1 with Summary**

**Customer: Clay County Sheriff's Department**

**Job Number:**

2017 CHEV Tahoe Commercial (Fleet) 4D UTV 8-5.3L Flex Fuel Direct Injection

**ESTIMATE TOTALS**

<b>Category</b>	<b>Basis</b>	<b>Rate</b>	<b>Cost \$</b>
Parts			9,411.97
Body Labor	37.2 hrs @	\$ 66.00 /hr	2,455.20
Paint Labor	20.4 hrs @	\$ 60.00 /hr	1,224.00
Mechanical Labor	4.0 hrs @	\$ 100.00 /hr	400.00
Paint Supplies	20.4 hrs @	\$ 44.00 /hr	897.60
Miscellaneous			150.97
Subtotal			14,539.74
<b>Grand Total</b>			<b>14,539.74</b>

**MyPriceLink Estimate ID / Quote ID:**

1275206693982052352 / 140541130

**Preliminary Supplement 1 with Summary**

**Customer: Clay County Sheriff's Department**

**Job Number:**

2017 CHEV Tahoe Commercial (Fleet) 4D UTV 8-5.3L Flex Fuel Direct Injection

**SUPPLEMENT SUMMARY**

Line	Oper	Description	Part Number	Qty	Extended Price \$	Labor	Paint
<b>Changed Items</b>							
10	#	Repl roughneck grille guard		1	-799.00	-1.0	
10	#	S01 Repl roughneck grille guard +25%		1	998.75	1.0	
15	*	Repl LKQ RT Headlamp assy w/o HID lamps +25%	84294339	1	<u>-766.25</u>		
19	*	S01 Repl LKQ RT Headlamp assy w/o HID lamps +25%	84294339	1	<u>766.25</u>	Incl.	
38	*	R&I RT Upper molding				<u>-0.3</u>	
74	*	S01 R&I RT Upper molding				<u>Incl.</u>	
43	*	R&I RT Applique				<u>-0.3</u>	
76	*	S01 R&I RT Applique				<u>Incl.</u>	
44	*	R&I RT Belt molding				<u>-0.9</u>	
77	*	S01 R&I RT Belt molding				<u>Incl.</u>	
46	*	R&I RT Handle, outside body color, w/o chrome w/o passive				<u>-0.3</u>	
79	*	S01 R&I RT Handle, outside body color, w/o chrome w/o passive				<u>Incl.</u>	
56	#	Repl paint and materials cap		1	277.60		
103	#	S01 Repl remove paint and materials cap		1			
<b>Deleted Items</b>							
14	*	R&I LT Headlamp assy w/o HID lamps				<u>-0.1</u>	
39	*	Rpr RT Outer panel Tahoe & Yukon				<u>-2.0</u>	<u>-2.4</u>
40		Overlap Major Adj. Panel					0.4
41	*	Add for Clear Coat					<u>0.0</u>
<b>Added Items</b>							
11		S01 Repl RT Trim cover w/o fog lamps	22936498	1	48.82	Incl.	
12		S01 Repl RT Filler panel	22936500	1	48.65	Incl.	
13		S01 R&I License bracket				0.2	
16		S01 Repl Emblem gold	84690310	1	167.32	Incl.	
18	*	S01 Repl LKQ LT Headlamp assy w/o HID lamps +25%	23490005	1	883.50	<u>0.1</u>	
21	<b>RADIATOR SUPPORT</b>						
22		S01 Repl Sight shield	84295007	1	96.90	0.2	
23	**	S01 Repl A/M CAPA Radiator support	85545442	1	439.00	7.4	
24		S01 Evacuate & recharge				m 1.4	M
25		S01 Add for trans cooler				m 0.3	M
26	**	S01 Repl A/M CAPA Mount panel	23266739	1	598.00	Incl.	
27		S01 Add for shutter				m 0.3	M
28	**	S01 Repl A/M CAPA Shutter	84378163	1	285.00	0.7	
29		S01 Repl Radiator support cushion	22825456	1	114.14		
30		S01 Repl Radiator support stopper	22806716	1	4.35		
31		S01 Repl Temp sensor	13583411	1	15.34		



**Preliminary Supplement 1 with Summary**

**Customer: Clay County Sheriff's Department**

**Job Number:**

2017 CHEV Tahoe Commercial (Fleet) 4D UTV 8-5.3L Flex Fuel Direct Injection

32	<b>COOLING</b>								
33	**	S01	Repl	A/M Radiator 6-speed trans w/o max trailer pkg	84186718	1	337.00 m	Incl.	
34	**	S01	Repl	A/M Reservoir tank	84368362	1	76.38	Incl.	
35		S01	R&I	R&I shroud as an assy			m	Incl.	
36	<b>AIR CONDITIONER &amp; HEATER</b>								
37		S01	R&I	Condenser assy Delphi			m	Incl.	
38		S01	Repl	Compressor assy bracket	12626078	1	76.56		
45		S01	Repl	Front seal	20963560	1	55.09	Incl.	
46		S01	Repl	Latch assy	85574818	1	98.68	Incl.	
59		S01	Repl	RT Fender upper bracket	23488050	1	58.87	0.1	
60	<b>ELECTRICAL</b>								
61		S01	Repl	Battery tray	84177367	1	96.26	Incl.	
62	<b>ENGINE</b>								
63		S01	Repl	Air cleaner assy support	84129816	1	95.07		
64		S01	Repl	Air cleaner assy	23252207	1	157.32 m	Incl.	
67	*	S01	Rpr	<u>RT Roof rail</u>			s	<u>1.0</u>	<u>1.2</u>
68		S01		Overlap Major Adj. Panel					-0.4
69		S01		Add for Clear Coat					0.2
71	*	S01	Repl	LKQ RT door assy +25%	84348727	1	975.00	<u>5.4</u>	3.1
72		S01		Overlap Major Adj. Panel					-0.4
73		S01		Add for Clear Coat					0.5
80	*	S01	Repl	RT Lower hinge	13581569	1	<u>Incl.</u>	0.3	0.3
81		S01		Add for Clear Coat					0.1
82	#	S01	R&I	detrिम LKQ door assy				2.5	
83	*	S01	Repl	RT Upper hinge	13581568	1	<u>Incl.</u>	0.3	0.3
84		S01		Add for Clear Coat					0.1
85		S01	Repl	RT Front w'strip	22888057	1	53.72	0.1	
86	<b>REAR DOOR</b>								
87	*	S01	Rpr	RT Outer panel Tahoe & Yukon				<u>1.0</u>	2.1
88		S01		Overlap Major Adj. Panel					-0.4
89		S01		Add for Clear Coat					0.3
90		S01	R&I	RT Belt w'strip				0.3	
91		S01	R&I	RT Handle, outside w/o chrome w/o passive				0.4	
92		S01	R&I	RT R&I trim panel				0.4	
93		S01	R&I	RT Upper trim panel				0.1	
104	#	S01	R&I	emergency lights- roof mounted				1.0	
105	#	S01	Repl	siren		1	1.00	0.5	M
				NOTE: invoice					
106	#	S01	Repl	led lamps- grille guard mounted		1	1.00	0.5	M
				NOTE: invoice					
107	#	S01	Subl	decals		1	1.00 X		
				NOTE: invoice					
108	**	S01	Repl	A/M Coolant (Extended life/OEM)		2	43.98 T		

**Preliminary Supplement 1 with Summary**

**Customer: Clay County Sheriff's Department**

**Job Number:**

2017 CHEV Tahoe Commercial (Fleet) 4D UTV 8-5.3L Flex Fuel Direct Injection

109	#	S01	Subl	freon	1	1.00	X	
				NOTE: invoice				
110	#	S01	Subl	Four wheel alignment	1	89.99	X	
111	#	S01	Rpr	Setup & measure				2.0
112	#	S01	Rpr	frame pulls				3.0
				NOTE: rt frame rail is up and sidesway				
<b>SUBTOTALS</b>						<b>5,396.29</b>		<b>25.6</b>
								<b>5.0</b>

**TOTALS SUMMARY**

Category	Basis	Rate	Cost \$
Parts			5,260.32
Body Labor	22.6 hrs @	\$ 66.00 /hr	1,491.60
Paint Labor	5.0 hrs @	\$ 60.00 /hr	300.00
Mechanical Labor	3.0 hrs @	\$ 100.00 /hr	300.00
Paint Supplies	5.0 hrs @	\$ 44.00 /hr	220.00
Miscellaneous			135.97
Subtotal			7,707.89
<b>Total Supplement Amount</b>			<b>7,707.89</b>
<b>NET COST OF SUPPLEMENT</b>			<b>7,707.89</b>

**MyPriceLink Estimate ID / Quote ID:**

1275206693982052352 / 140541130

**CUMULATIVE EFFECTS OF SUPPLEMENT(S)**

Estimate	6,831.85	Kaine Hibbs
Supplement S01	7,707.89	Kaine Hibbs
<b>Job Total:</b>	<b>\$ 14,539.74</b>	

## Preliminary Supplement 1 with Summary

**Customer: Clay County Sheriff's Department**

**Job Number:**

2017 CHEV Tahoe Commercial (Fleet) 4D UTV 8-5.3L Flex Fuel Direct Injection

Estimate based on MOTOR CRASH ESTIMATING GUIDE and potentially other third party sources of data. Unless otherwise noted, (a) all items are derived from the Guide DR1GC15, CCC Data Date 10/09/2024, and potentially other third party sources of data; and (b) the parts presented are OEM-parts. OEM parts are manufactured by or for the vehicle's Original Equipment Manufacturer (OEM) according to OEM's specifications for U.S. distribution. OEM parts are available at OE/Vehicle dealerships or the specified supplier. OPT OEM (Optional OEM) or ALT OEM (Alternative OEM) parts are OEM parts that may be provided by or through alternate sources other than the OEM vehicle dealerships with discounted pricing. Asterisk (\*) or Double Asterisk (\*\*) indicates that the parts and/or labor data provided by third party sources of data may have been modified or may have come from an alternate data source. Tilde sign (~) items indicate MOTOR Not-Included Labor operations. The symbol (<>) indicates the refinish operation WILL NOT be performed as a separate procedure from the other panels in the estimate. Non-Original Equipment Manufacturer aftermarket parts are described as Non OEM, A/M or NAGS. Used parts are described as LKQ, RCY, or USED. Reconditioned parts are described as Recond. Recored parts are described as Recore. NAGS Part Numbers and Benchmark Prices are provided by National Auto Glass Specifications. Labor operation times listed on the line with the NAGS information are MOTOR suggested labor operation times. NAGS labor operation times are not included. Pound sign (#) items indicate manual entries.

Some 2024 vehicles contain minor changes from the previous year. For those vehicles, prior to receiving updated data from the vehicle manufacturer, labor and parts data from the previous year may be used. The CCC ONE estimator has a list of applicable vehicles. Parts numbers and prices should be confirmed with the local dealership.

The following is a list of additional abbreviations or symbols that may be used to describe work to be done or parts to be repaired or replaced:

### SYMBOLS FOLLOWING PART PRICE:

m=MOTOR Mechanical component. s=MOTOR Structural component. T=Miscellaneous Taxed charge category. X=Miscellaneous Non-Taxed charge category.

### SYMBOLS FOLLOWING LABOR:

D=Diagnostic labor category. E=Electrical labor category. F=Frame labor category. G=Glass labor category. M=Mechanical labor category. S=Structural labor category. (numbers) 1 through 4=User Defined Labor Categories.

### OTHER SYMBOLS AND ABBREVIATIONS:

Adj.=Adjacent. Algn.=Align. ALU=Aluminum. A/M=Aftermarket part. Bld=Blend. BOR=Boron steel. CAPA=Certified Automotive Parts Association. CFC=Carbon Fiber. D&R=Disconnect and Reconnect. HSS=High Strength Steel. HYD=Hydroformed Steel. Incl.=Included. LKQ=Like Kind and Quality. LT=Left. MAG=Magnesium. Non-Adj.=Non Adjacent. NSF=NSF International Certified Part. O/H=Overhaul. Qty=Quantity. Refn=Refinish. Repl=Replace. R&I=Remove and Install. R&R=Remove and Replace. Rpr=Repair. RT=Right. SAS=Sandwiched Steel. Sect=Section. STS=Stainless Steel. Subl=Sublet. UHS=Ultra High Strength Steel. N=Note(s) associated with the estimate line.

CCC ONE Estimating - A product of CCC Intelligent Services Inc.

The following is a list of abbreviations that may be used in CCC ONE Estimating that are not part of the MOTOR CRASH ESTIMATING GUIDE:

BAR=Bureau of Automotive Repair. EPA=Environmental Protection Agency. NHTSA= National Highway Transportation and Safety Administration. PDR=Paintless Dent Repair. VIN=Vehicle Identification Number.

**Preliminary Supplement 1 with Summary**

**Customer: Clay County Sheriff's Department**

**Job Number:**

2017 CHEV Tahoe Commercial (Fleet) 4D UTV 8-5.3L Flex Fuel Direct Injection

**PARTS SUPPLIER LIST**

<b>Line</b>	<b>Supplier</b>	<b>Description</b>	<b>Price</b>
7	UCC - New World National Auto Parts 1720 East State Highway 356 Irving TX 75060 (214) 352-1191 x725	#GM1044136 A/M Lower molding w/o adaptive cruise w/tow hooks Quote: Q5649845 Expires: 10/15/24	\$ 102.00
9	UCC - New World National Auto Parts 1720 East State Highway 356 Irving TX 75060 (214) 352-1191 x725	#GM1095201 A/M Air deflector w/o Police pkg Quote: Q5649874 Expires: 10/15/24	\$ 91.00
18	A-Z Auto Parts 10824 NE 23RD ST. OKLAHOMA CITY OK 73141 (405) 769-4122	#0B447475 LKQ LT Headlamp assy w/o HID lamps +25% 000 4DR SUV Quote: CCC-257106579 Expires: 10/24/24	\$ 706.80
23	National Autobody Parts Warehouse 2000 E Main Street Grand Prairie TX 75050 (800) 214-7222	#GM1225311C A/M CAPA Radiator support Quote: 2895969573 Expires: 10/21/24	\$ 439.00
26	Keystone, Inc 4003 GRAND LAKES WAY, SUITE 200 GRAND PRAIRIE TX 75050 (972) 764-2272	#GM1220171C A/M CAPA Mount panel Quote: 2696031769 Expires: 11/28/24	\$ 598.00
28	Keystone, Inc 4003 GRAND LAKES WAY, SUITE 200 GRAND PRAIRIE TX 75050 (972) 764-2272	#GM1206125C A/M CAPA Shutter Quote: 2696032224 Expires: 11/28/24	\$ 285.00
33	1-800-Radiator & A/C 406B JALICH DRIVE WICHITA FALLS TX 76301 (940) 322-7100	#103809PB A/M Radiator 6-speed trans w/o max trailer pkg Quote: 41973480 Expires: 10/28/24	\$ 337.00
34	Keystone, Inc 4003 GRAND LAKES WAY, SUITE 200 GRAND PRAIRIE TX 75050 (972) 764-2272	#GM3014134 A/M Reservoir tank Quote: 2696034492 Expires: 11/28/24	\$ 76.38
57	LKQ Corp 904 I-45 South Hutchins TX 75141	#~397786227 LKQ RT Fender liner Tahoe w/o Z71 pkg +25% Inner Fender Liner DENALI,4DR R, R.,S#\$W0525	\$ 85.00

**Preliminary Supplement 1 with Summary**

---

**Customer: Clay County Sheriff's Department**

**Job Number:**

2017 CHEV Tahoe Commercial (Fleet) 4D UTV 8-5.3L Flex Fuel Direct Injection

(972) 225-1600

Quote: 2696011923

Expires: 11/28/24

---

71	A-Z Auto Parts 10824 NE 23RD ST. OKLAHOMA CITY OK 73141 (405) 769-4122	#02402382 LKQ RT door assy +25% 4P1 H4W GXG BLK 4DR Quote: CCC-257106974 Expires: 10/24/24	\$ 780.00
----	---	--	-----------



Document Name: Photo 01.jpg

Remarks:



Document Name: Photo 02.jpg

Remarks:



Document Name: Photo 03.jpg

Remarks:



Document Name: Photo 04.jpg

Remarks:





Document Name: Photo 05.jpg

Remarks:



Document Name: Photo 06.jpg

Remarks:





Document Name: Photo 07.jpg

Remarks:



Document Name: Photo 08.jpg

Remarks:



Document Name: Photo 09.jpg

Remarks:



Document Name: Photo 10.jpg

Remarks:



Document Name: Photo 11.jpg

Remarks:



Document Name: Photo 12.jpg

Remarks:





Document Name: Photo 13.jpg

Remarks:



Document Name: Photo 14.jpg

Remarks:



Document Name: Photo 15.jpg

Remarks:



Document Name: Photo 16.jpg

Remarks:





Document Name: Photo 17.jpg

Remarks:



Document Name: Photo 18.jpg

Remarks:



Document Name: Photo 19.jpg

Remarks:



Document Name: Photo 20.jpg

Remarks:





Document Name: Photo 21.jpg

Remarks:



Document Name: Photo 22.jpg

Remarks:





Document Name: Photo 23.jpg

Remarks:



Document Name: Photo 24.jpg

Remarks:



Document Name: Photo 25.jpg

Remarks:



Document Name: Photo 26.jpg

Remarks:





Document Name: Photo 27.jpg

Remarks:



Document Name: Photo 28.jpg

Remarks:



Document Name: Photo 29.jpg

Remarks:



Document Name: Photo 30.jpg

Remarks:





Document Name: Photo 31.jpg

Remarks:



Document Name: Photo 32.jpg

Remarks:



Document Name: Photo 33.jpg

Remarks:



Document Name: Photo 34.jpg

Remarks:





Document Name: Photo 35.jpg

Remarks:



Document Name: Photo 36.jpg

Remarks:



Document Name: Photo 37.jpg

Remarks:



Document Name: Photo 38.jpg

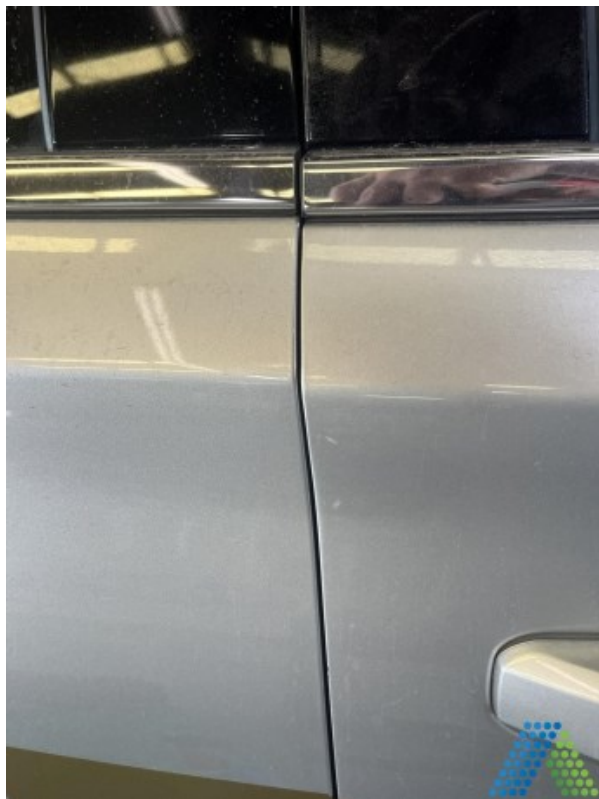
Remarks:





Document Name: Photo 39.jpg

Remarks:



Document Name: Photo 40.jpg

Remarks:



Document Name: Photo 41.jpg

Remarks:



Document Name: Photo 42.jpg

Remarks:







Document Name: Photo 45.jpg

Remarks:



Document Name: Photo 46.jpg

Remarks:



Document Name: Photo 47.jpg

Remarks:



Document Name: Photo 48.jpg

Remarks:





Document Name: Photo 49.jpg

Remarks:



Document Name: Photo 50.jpg

Remarks:



Document Name: Photo 51.jpg

Remarks:



Document Name: Photo 52.jpg

Remarks:





Document Name: Photo 53.jpg

Remarks:



Document Name: Photo 54.jpg

Remarks:





Document Name: Photo 55.jpg

Remarks:



Document Name: Photo 56.jpg

Remarks:





Document Name: Photo 57.jpg

Remarks:



Document Name: Photo 58.jpg

Remarks: